



Market Summary		Daily View	
Close	11,458	Cautious Buy	
Change	76	Technical Summary	
Volume (mln)	280	Trend	<div></div>
% A/D	0.8	Technical Indicators	<div></div>
%Stocks > 50-DMA	68.7	DMAs	<div></div>
%Stocks Overbought	0.4	EMAs Cross	<div></div>
%Stocks Oversold	0.4		<div></div>

Pivots		Fibonacci	
High/Low			
R-3	11,550	R-3	11,507
R-2	11,507	R-2	11,481
R-1	11,482	R-1	11,465
PP	11,439	PP	11,439
S-1	11,415	S-1	11,413
S-2	11,371	S-2	11,397
S-3	11,347	S-3	11,371

Technical Analysis Brief

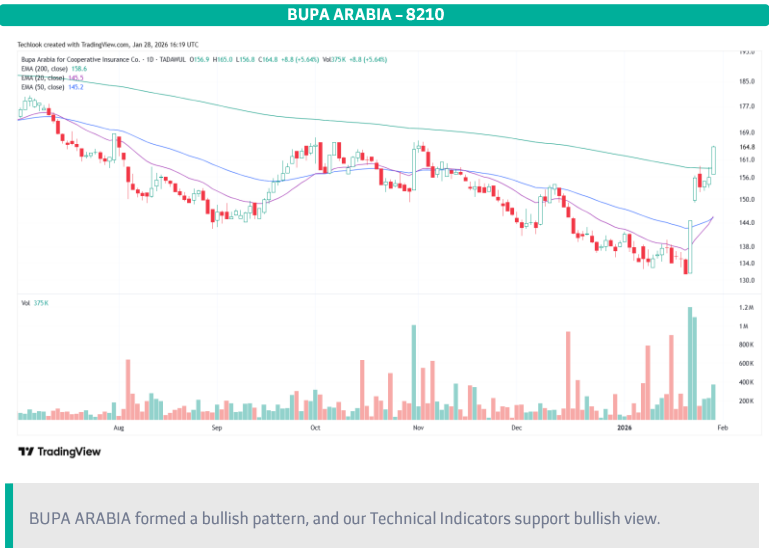
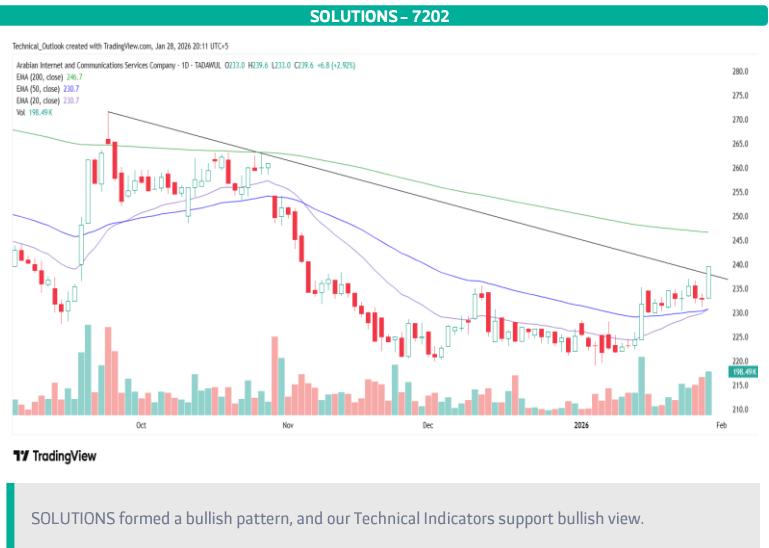
TASI gained 76 points yesterday; to close at 11,458. Most sectors ended the session in green, led by the Energy sector, and the heavily-weighted Banking sector, which increased by +1.5% and +0.6%, respectively. However, market liquidity decreased, by -5% D/D; to SAR 6.3 bln. TASI’s upward drive is now approaching a key resistance at the declining trend-line around 11,525 that defines the downtrend from a high of 12,536 points. A short-term bull trend is countering a long-term bear trend. Measuring the broader downtrend from 12,536 to 10,281 the index retraces 61.8% at 11,674 points which is above the trend-line. Momentum on the RSI is now in oversold territory, closing at 77.27. We continue with a Cautious Buy stance. Looking ahead key resistance levels are at 11,482 and 11,525 points. Conversely key support levels are 11,436 and 11,395 points.

Stock Picks for Today

Company	Code	Close	Start Buying	Sell Range	Stop Loss
RIYADH CABLES	4142	132.90	133.10	134.30	130.90
CATRION	6004	83.10	83.30	84.00	81.85
ALDREES	4200	121.30	121.70	122.70	119.50
HERFY FOODS	6002	16.52	16.60	16.75	16.30
NAHDI	4164	98.70	99.00	99.90	97.20
MOUWASAT	4002	70.25	70.45	71.00	69.20
BUPA ARABIA	8210	164.80	165.10	166.60	162.30
SABIC	2010	57.40	57.60	58.10	56.55
SOLUTIONS	7202	239.60	240.10	242.10	236.00
AWPT	2081	129.70	130.05	131.20	127.75

*Above list is valid for only one day**All Prices in SAR

Charts of The Day



News of The Day

- Fed maintained rate steady, despite 2 members opposing the decision.
- According to SAMA, POS transactions reached SAR 12.5 bln last week.
- Fitch reported that, Saudi banks credit profiles remained strong.
- MIS signed agreement to acquire 15% stake in Eltizam Insurance Platform for SAR 19.5 mln.
- A subsidiary of Saudi Steel Pipe signed SAR 300 mln offshore project contract.
- Oil prices rose to their highest since late September on Wednesday on looming Iran concerns while a weak U.S. dollar lent further support. Brent settled up 83 cents, or +1.23%, to \$68.40 per barrel. WTI closed 82 cents, or +1.31%, higher at \$63.21 per barrel.

Research Team

research@riyadcapital.com
+966-11-203-6805

Sources: Riyadh Capital, Tadawul, Bloomberg, Reuters, Argaam and TradingView

Technical Analysis Glossary

Support and Resistance levels: Identifies price levels where historically the price reacted either by reversing or at least by slowing down .

Breakout: Refers to when the price of a stock moves above a resistance area, or moves below a support area.

Breakdown: A downward move in a stock's price, usually through an identified level of support, that portends further declines.

Candlesticks: Show four price points (open, close, high, and low) throughout the period of time the trader specifies.

Pivot Points: Significant price levels known in advance which traders view as important and may make trading decisions around that level.

A/D ratio: The number of advancing shares divided by the number of declining shares. helps traders determine potential trends, existing trends and the reversal of such trends.

Daily Moving Average (DMA): A widely used technical indicator that smooths out price trends by filtering out the noise from random short-term price fluctuations.

Momentum: is the rate of acceleration of a security's price, the speed at which the price is changing.

The relative strength index (RSI): Measures the speed and magnitude of a security's recent price changes to evaluate overvalued or undervalued conditions in the price of that security.

Overbought: A term used when a security is believed to be trading at a level above its intrinsic or fair value.

Oversold: The opposite of overbought, where a security is thought to be trading below its intrinsic value.

Stochastic: A momentum indicator comparing a particular closing price of a security to a range of its prices over a certain period of time.

Moving average convergence divergence (MACD): A trend-following momentum indicator that shows the relationship between two moving averages of a security's price. MACD helps investors understand whether the bullish or bearish movement in the price is strengthening or weakening.

The average directional index (ADX): Used to determine when the price is trending strongly.

The average true range (ATR): Measures market volatility by decomposing the entire range of an asset price for that period.

Disclaimer:

Riyad Capital is a Saudi closed joint stock company with paid-up capital of SAR 500 million. Licensed by the Saudi Arabian Capital Market Authority (No. 07070-37). Commercial Registration No. 1010239234. Head Office: 3128 Financial Boulevard, 6671 Al Aqeeq Dist., Riyadh 13519, Kingdom of Saudi Arabia. Ph: 920012299. The information in this report was compiled in good faith from various public sources believed to be reliable. Whilst all reasonable care has been taken to ensure that the facts stated in this report are accurate and that the forecasts, opinions and expectations contained herein are fair and reasonable. Riyad Capital makes no representations or warranties whatsoever as to the accuracy of the data and information provided and, in particular, Riyad Capital does not represent that the information in this report is complete or free from any error. This report is not, and is not to be construed as, an offer to sell or solicitation of an offer to buy any financial securities. Accordingly, no reliance should be placed on the accuracy, fairness or completeness of the information contained in this report. Riyad Capital accepts no liability whatsoever for any loss arising from any use of this report or its contents, and neither Riyad Capital nor any of its respective directors, officers or employees, shall be in any way responsible for the contents hereof. Riyad Capital may provide or has provided within the previous 12 months significant advice or securities business services to the issuer of the securities concerned or of a related security. Riyad Capital or its employees or any of its affiliates or clients may have a financial interest in securities or other assets referred to in this report. Opinions, forecasts or projections contained in this report represent Riyad Capital's current opinions or judgment as at the date of this report only and are therefore subject to change without notice. There can be no assurance that future results or events will be consistent with any such opinions, forecasts or projections which represent only one possible outcome. Further, such opinions, forecasts or projections are subject to certain risks, uncertainties and assumptions that have not been verified and future actual results or events could differ materially. The value of, or income from, any investments referred to in this report may fluctuate and/or be affected by changes and part of the capital invested may be used to pay that income. Past performance is not necessarily an indicative of future performance. Accordingly, investors may receive back less than originally invested amount. The security may be subject to sudden and large falls in value which could cause a loss equal to the amount invested; and that the investor's loss may not be limited to the amount originally invested or deposited, but may have to pay more. This report provides information of a general nature and does not address the circumstances, objectives, and risk tolerance of any particular investor. Therefore, it is not intended to provide personal investment advice and does not take into account the reader's financial situation or any specific investment objectives or particular needs which the reader may have. Before making an investment decision the reader should seek advice from an independent financial, legal, tax and/or other required advisers due to the investment in such kind of securities may not be suitable for all recipients. This research report might not be reproduced, nor distributed in whole or in part, and all information, opinions, forecasts and projections contained in it are protected by the copyright rules and regulations.